

Safety, Health & Environmental Information:

In addition to the hazards and risks normally associated with the types of work detailed on this drawing, please note the significant hazards identified by symbols below.

INDICATES A RESIDUAL RISK AS A WARNING

INDICATES A RESIDUAL RISK FOR INFORMATION

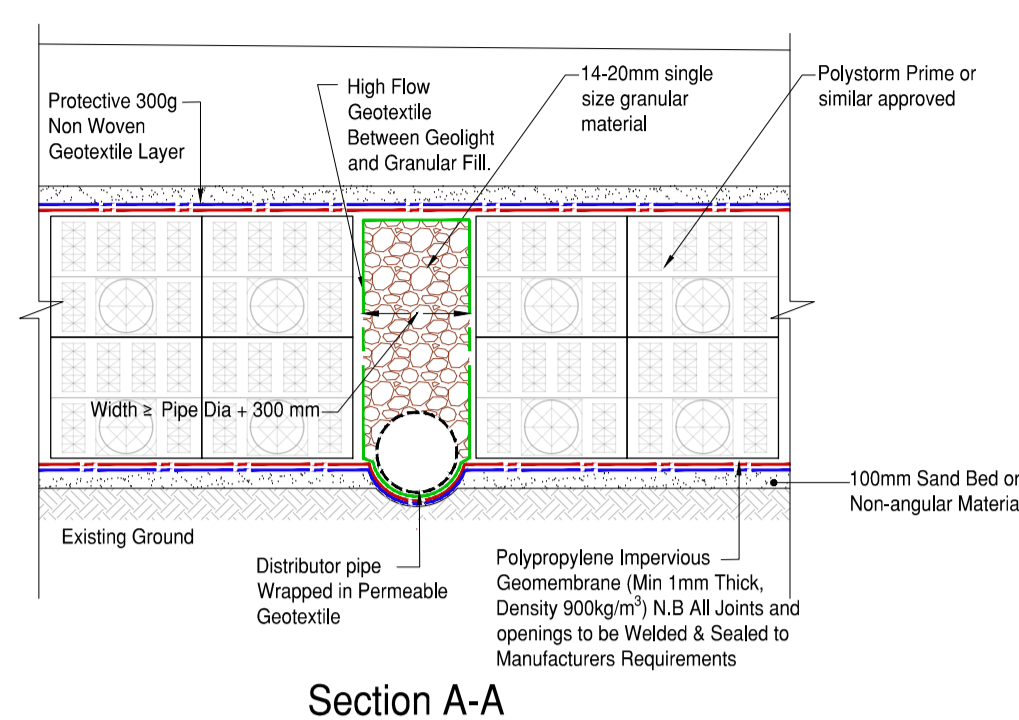
and described below:

Construction/Maintenance/Cleaning/Demolition

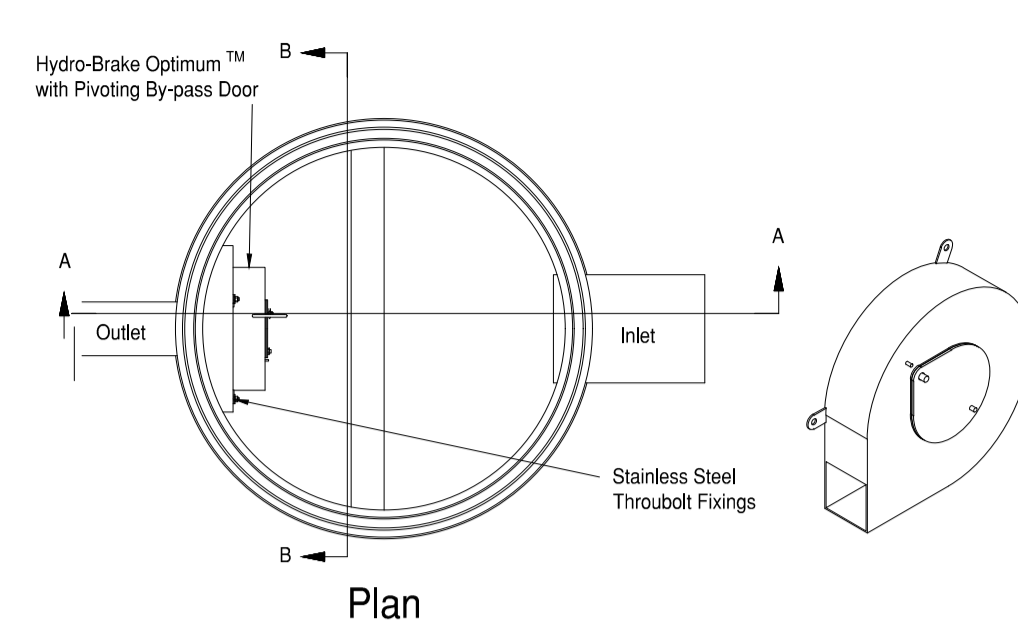
Refer to drawing RRN-BML-ERD-ZZ-DR-C-0XXX

General Notes:

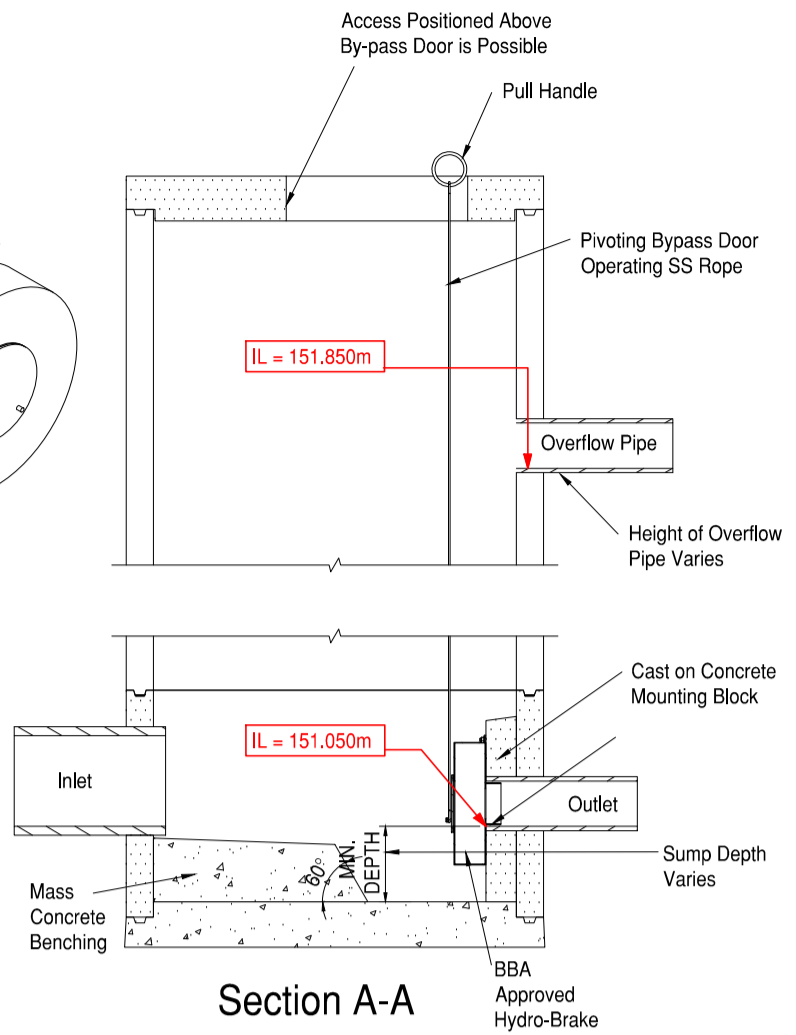
1. Do not scale from this drawing.
2. All dimensions & all levels in metres (m) unless noted otherwise.
3. Discrepancies or omissions are to be reported to the Engineer prior to work commencing.
4. Materials and workmanship are to comply in all respects with current British Standard Specifications, Codes of Practice, and Building Regulations Approved Documents.
5. The copyright of this drawing is vested in the Engineer and must not be copied or reproduced without written consent.
6. The Contractor is to check and verify all building and site dimensions, levels and sewer invert levels at connection points before work commences.
7. This drawing is to be read in conjunction with all relevant specifications and drawings issued by the Engineer, Architect and other Specialists.



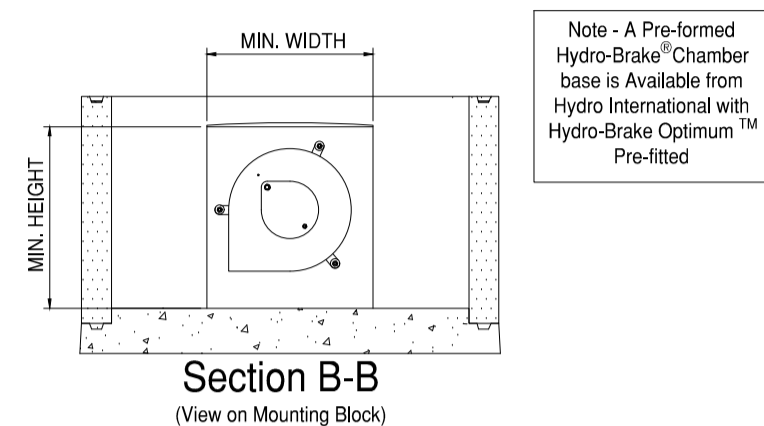
Section A-A



Plan



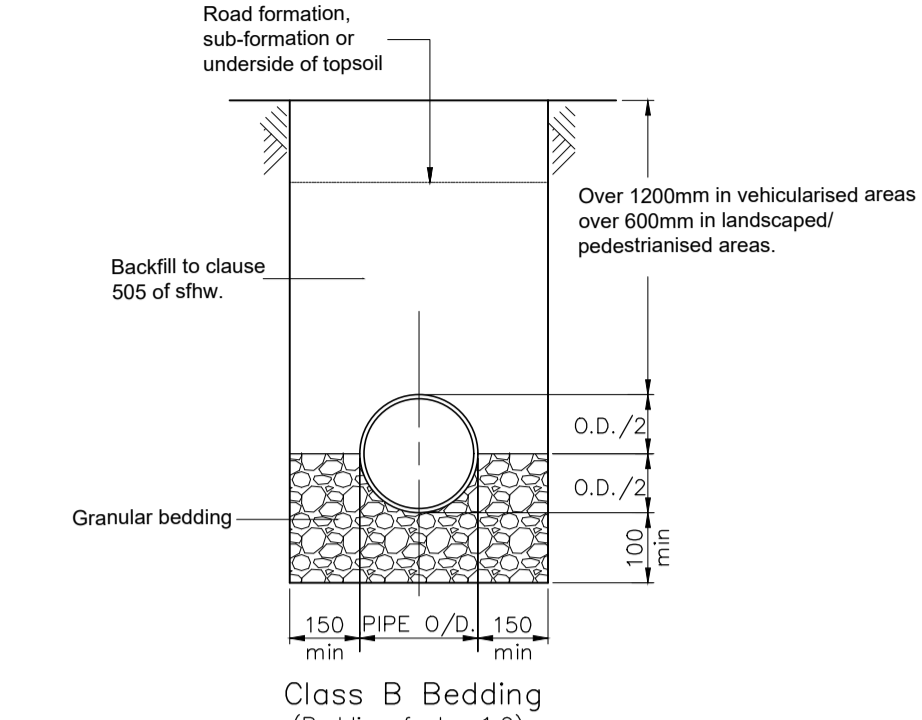
Section A-A



Section B-B (View on Mounting Block)

Typical Hydrobrake Chamber Detail With Overflow Pipe

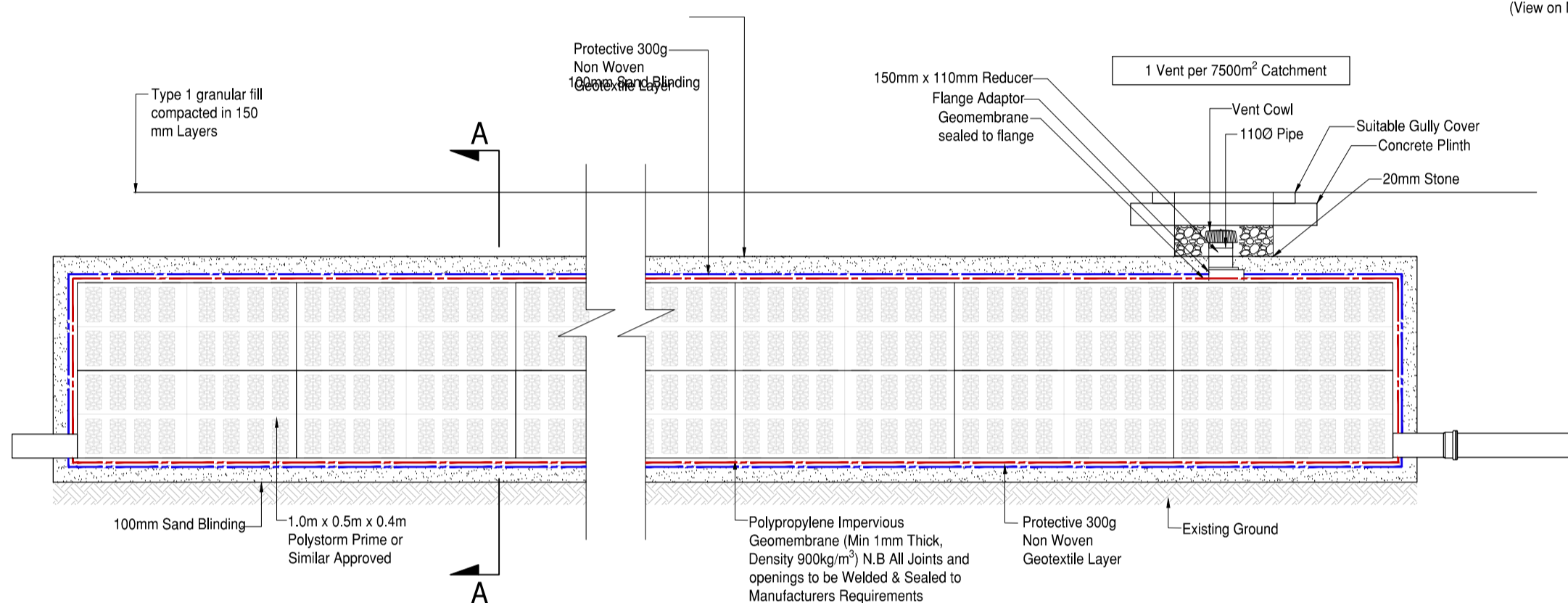
Scale 1:20



Class B Bedding (Bedding factor 1.9)

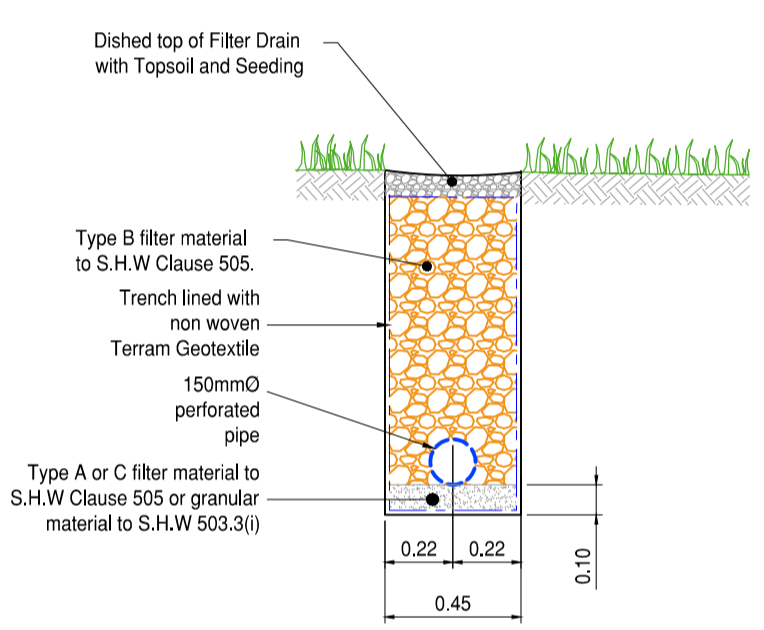
Bedding beneath and at the sides of the pipe to be well compacted the first 300mm of fill above the crown of the pipe is to be lightly tamped by hand. Mechanical compaction may be used only above this level. Geotextiles may be used where directed or approved by the engineer to contain bedding material in certain soils e.g. running sand in very wet conditions, where directed or approved by the engineer a temporary land drain may be laid within the granular bed.

Granular Pipe Bedding Details for Rigid Pipes



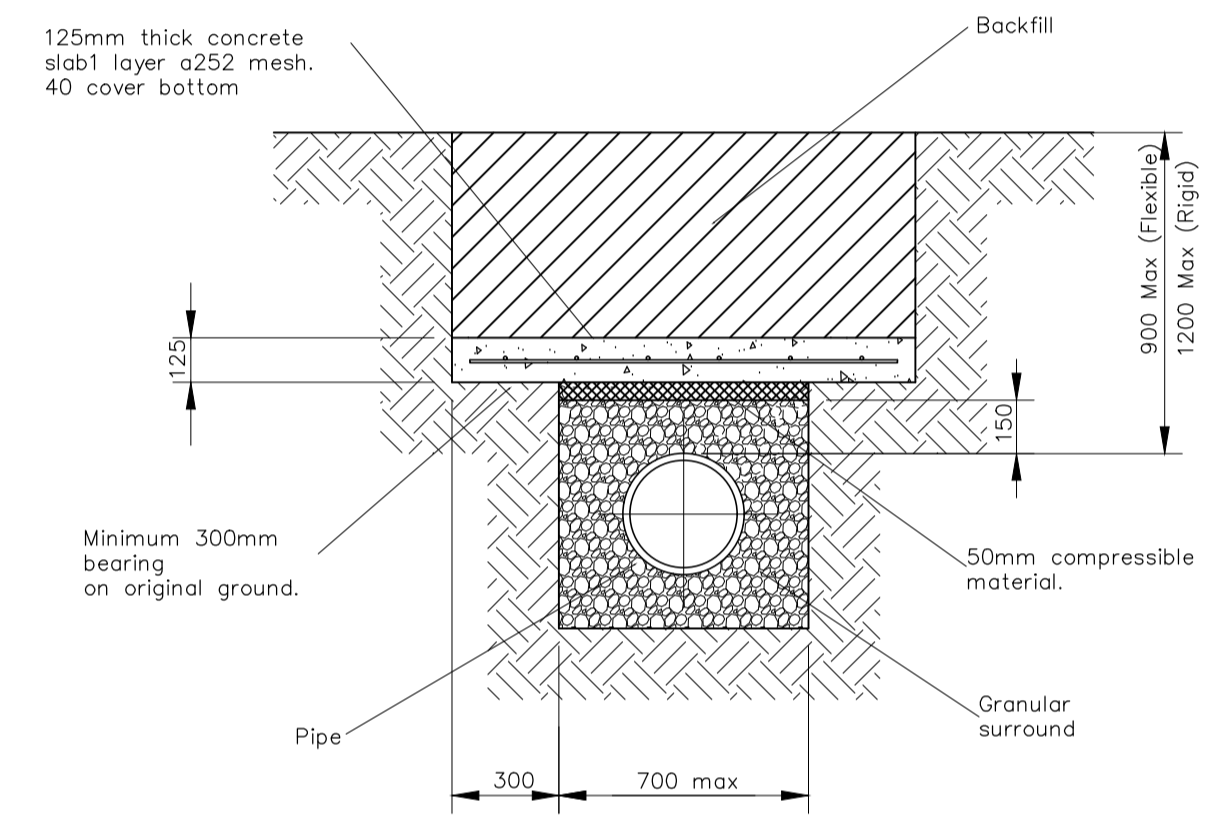
Typical Cellular Storage Tank

Scale 1:20

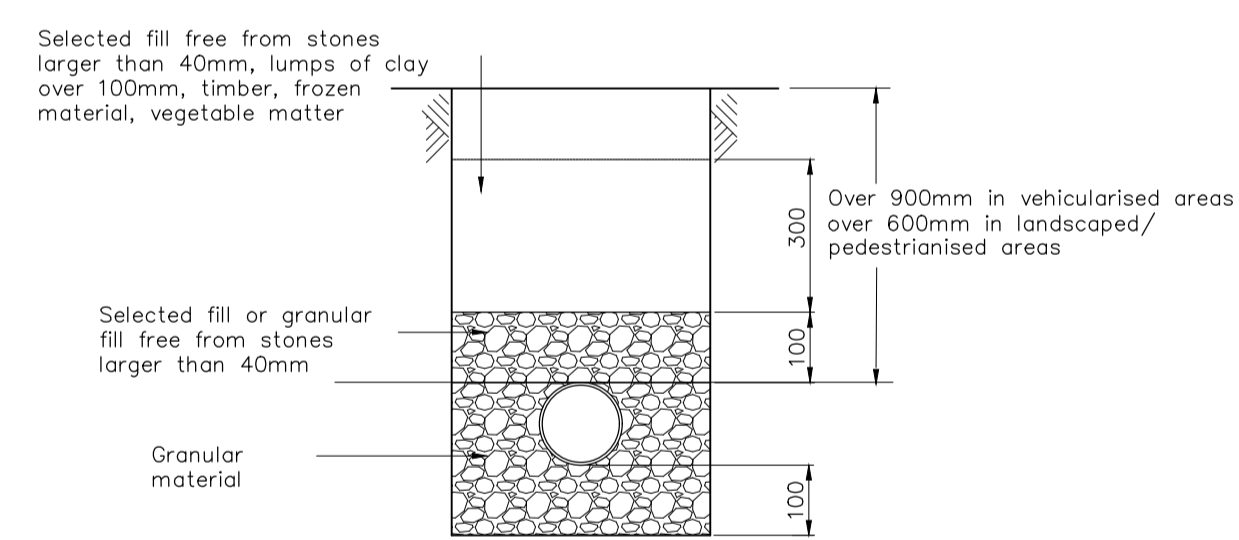


Typical Filter Drain Detail

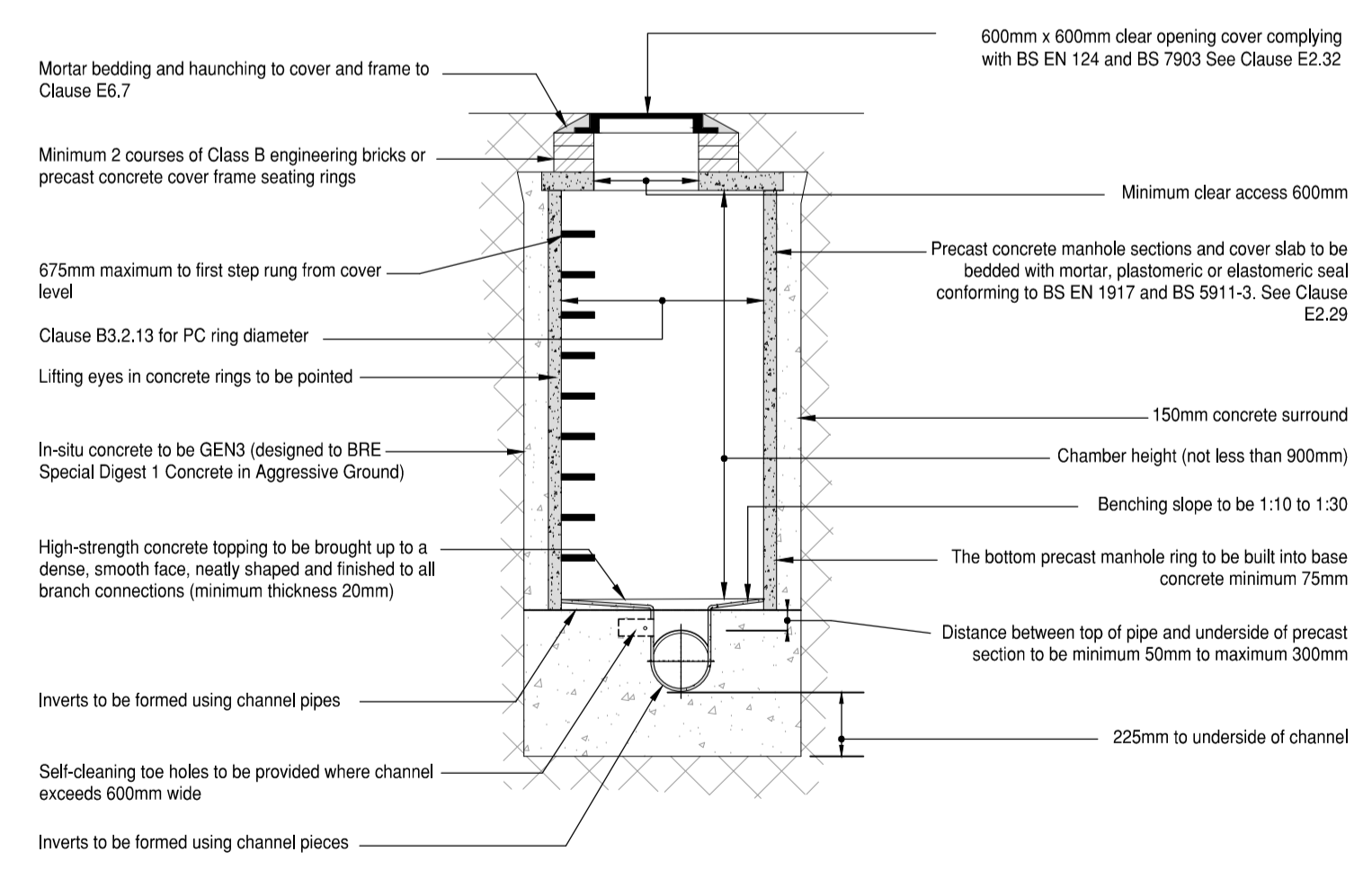
Scale 1:20



Protection for Pipes Laid at Shallow Depths

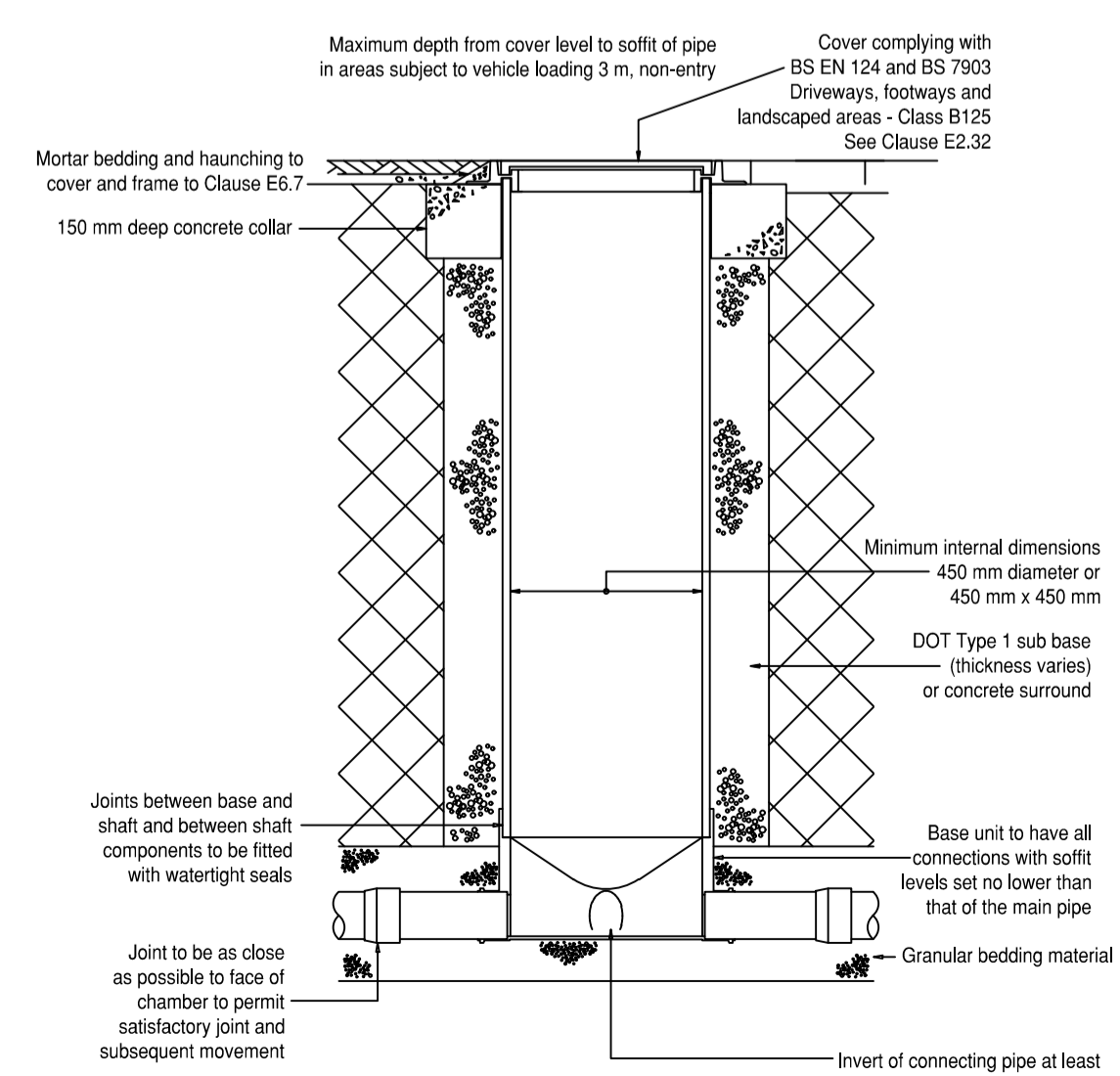


Granular Pipe Bedding Details for Flexible Pipes



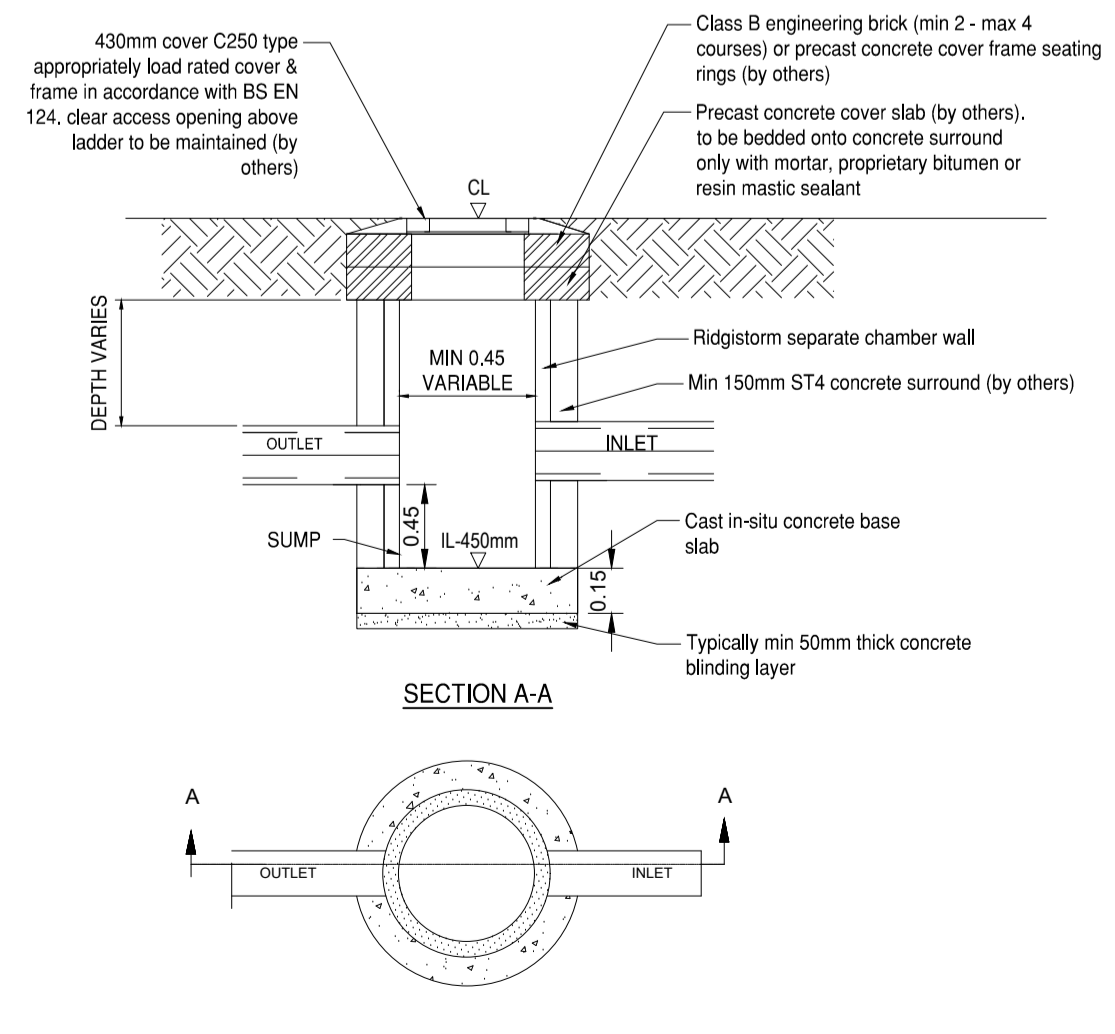
Typical Manhole Detail (Max depth from cover to soffit of pipe 3.0m)

Scale 1:20



Typical Inspection Chamber Detail (Flexible Material Detail)

NTS



Ridgistor Separate Catchpit

NTS

C01	KD/AM	26/06/23	Construction Issue
Rev	By / Chkd	Date	Description

CONSTRUCTION DRAWING
This drawing is to be used for construction

Client
Speller Metcalfe

BarnsleyMarshall Limited
1 Birch Court
Blackpole East
Worcester
WR3 8SG
Tel: 01905 330550
Email: design@barnsleymarshall.co.uk

Project
Cinderford Skate Park

Drawing

Drainage Details

Drawn by	Date
Checked by	Date

Drawing No. **CSP-BML-XX-XX-DR-C-0501** Revision **C01**

BML Job No.
0937-04

Drawing Scale at A1: **AS ASHOWN**

CAD Filename: